

# WORKSTATION @ Kinship



## What is Work Station?

Work Station @ Kinship is your go-to space to host business activities of all kinds.



## Business Solutions

Fully furnished private offices of various sizes can be leased by outside businesses at competitive rates, giving them a unique opportunity for office space in a prime Camp North End location.

## Isolation Pods

WorkStation tenants have 24/7 access to complimentary work pods, featuring sound isolation and individual lighting/air conditioning controls.



## Space to Unwind

A common lobby offers a comfortable place to lounge and grab a coffee in between meetings. Stay productive at Work Station.



# WORKSTATION

@ Kinship



## Premium Office

180-230sqft

**\$1300-\$1600/mo**

Compare to Area Avg.  
\$2020

### What's Included?

- 3+ Desks
- 3+ Filing Cabinets
- 5+ Chairs
- 1 Conference Table
- 3 Parking Passes



## Upgraded Office

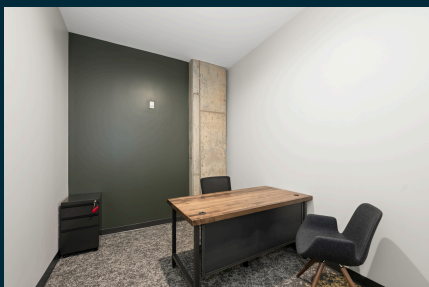
90-130sqft

**\$850/mo**

Compare to Area Avg. \$870

### What's Included? (Varies by Size)

- 1-2 Desks
- 1-2 Filing Cabinets
- 2-4 Chairs
- Wall-to-Wall Windows
- 2 Parking Passes



## Basic Office

115sqft

**\$500/mo**

Compare to Area Avg.  
\$570

### What's Included?

- 1 Desk
- 1 Filing Cabinet
- 2 Chairs
- 1 Parking Pass



## Engine Room

**10 Hours Free Each Month**

Additional Hours: \$20/hr

### What's Included?

- Conference Table
- In-Table USB, USBC, and Three-Prong Outlets
- 10 Chairs
- Frosted Glass Dry-Erase Board
- Presentation TV

## About Work Station

Work Station offers a variety of sizes, layouts, and price points to ensure your needs are met. Our price guide makes choosing the perfect Camp North End office space a breeze.

### Private Office Features

- Office Furniture
- Overhead Lighting
- Shades on Exterior Windows
- Mobile App Office Entry

### Work Station Amenities

- 24/7 Building Access
- Private Lobby Entrance
- Complimentary Weekly Cleaning Services
- 10 Free Meeting Room Hours Each Month
- Complimentary Coffee and Filtered Water
- Break Room with Sink, Fridge, & Microwave
- Parking Garage With Elevators
- Atrium with Coworking, Benches, & Tables
- Discounts Throughout Camp North End

Square footage is approximate and may vary between offices.  
Area avg. office cost calculated based on nearby Charlotte coworking rates.

